

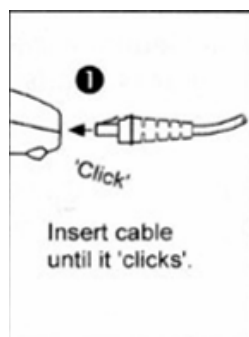
ProtoCOL 3

Installing Honeywell Voyager Scanner 9520-38-3

1

Unpacking the scanner

Connect



Unpack the scanner and connect the 10-pin RJ45 male connector of the USB cable into the jack on the scanner. There will be an audible *click* when the connection is made

2

Installing barcode software

Run



Run the install Barcode .exe

3

Connecting the scanner

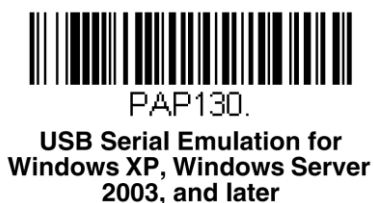
Connect the scanner to a free USB port at the back of the ProtoCOL 3 unit

Please note: The scanner will not yet be visible within device manager

4

Scan the barcode

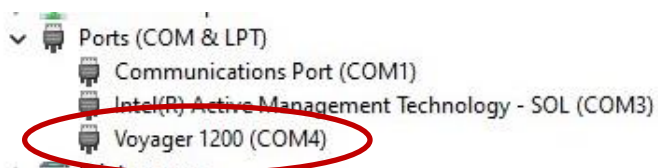
Scan:



Scan the barcode shown on this page to enable bi-directional USB emulation (set up the barcode reader into the correct mode for use)

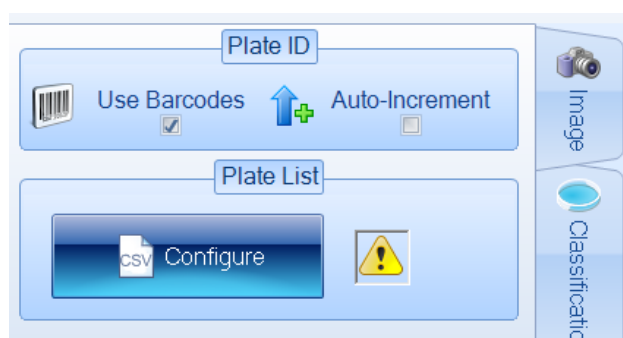
5 Device Manager

Select:



(Optional) Open Windows Device Manager – *Ports (COM & LPT)*, the scanner will now appear as a Voyager 1200. *Note – the COM port allocation will vary*

6 Selecting the barcode scanner



Open the ProtoCOL 3 software and log in

Select new batch and create a pour plate batch

Within the configuration tab select “Use Barcodes”

Use the pour plate validation plate within the ProtoCOL 3

Within total plate count select Dark Colonies only

Accept the batch

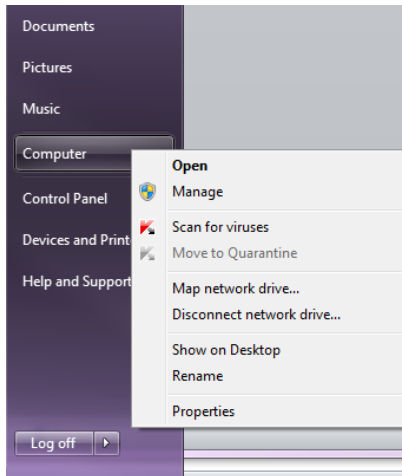
Scan the Synbiosis barcode on the left

The information from the barcode will appear in the plate ID window. Ensure the information says Synbiosis



ProtoCOL 3 is now ready for use with a barcode scanner

Appendix – Accessing and Using Device Manager



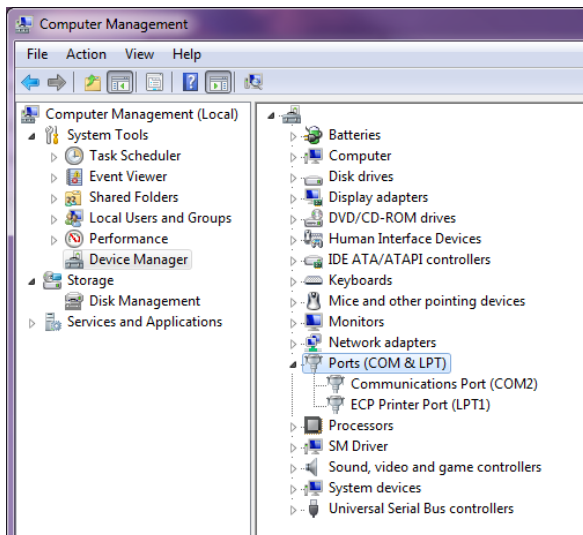
Access computer management by right clicking on computer within the Start menu

Select Manage. Enter the admin password as required

Select Device Manager

Select Ports (COM & LPT)

When the barcode reader has been installed, it will appear within the Ports section



ProtoCOL 3 Barcode reader is now ready for use

CONTACT SYNBIOISIS:

EUROPE:
Tel: +44 (0)1223 727125
Email: support@synbiosis.com
www.synbiosis.com

USA:
Tel: 800 686 4451/301 662 2863
Email: support@synbiosis.com
P3HVS1216